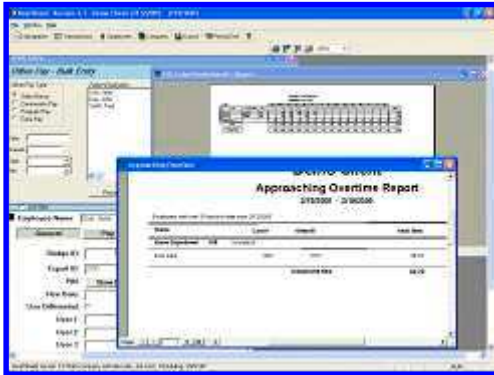


Aster Time & Attendance Management Software

ACMTAS Time & Attendance management system is used together with ACM125-BM RFID reader+writer unit to provide effective tracking and control of employee attendance. The system is easily configurable, flexible and stackable for allowing management of Time & Attendance for any number of employees in an organization. The searchable database offers MIS reporting in various formats as required by administrators. This easy to understand and use system, monitors staff attendance and saves manual labor in maintaining muster records. It also

quickens admin information presentation to the management and helps save time and cost while enabling the managers to target resources more effectively. This can be achieved through improved shift planning and greater budgetary control over available resources.

ACMTAS system ensures an accurate and automatic capture of data and its transfer to a payroll system. It provides flexibility in configuring for full compliance with work and time rules observed by the organization. It provides exception information on missed punches, multiple entries/exits, incorrect data, absence from work and leave management. It enhances the control of extra time facility while providing adjustments of paid overtime. A set of comprehensive MIS reports provide better visualization and analysis of time & attendance data.

ACMTAS offers cost-effective solution to time and attendance management issues.

Features:

- Data capture with Time & Attendance management software
- For use with ACM125-BM series RFID reader and proximity cards
- Provides data collection at large distances with multi-drop readers
- Fast and accurate verification of Employee ID and transactions
- Easy to use forms for data inputs with controlled editing facility
- Password control for restricted access to database
- Generate customized MIS reports
- Outputs HTML and text format data for Payroll usage
- 24 hour Shift control, leave and holidays management
- Email system for report transfer over Internet / Intranet
- Comprehensive help file system